



The Evolution of Giomer Technology.

As with all great technology, resin based composites continue to evolve and with this bioactive benefits have become increasingly important.

The Beautifil resin composite lines contain Shofu's proprietary Giomer technology, a bioactive surface pre-reacted glass (S-PRG) filler that actively releases six beneficial ions including fluoride.

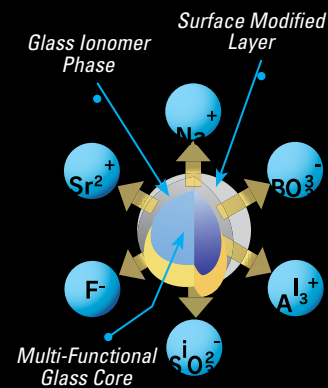
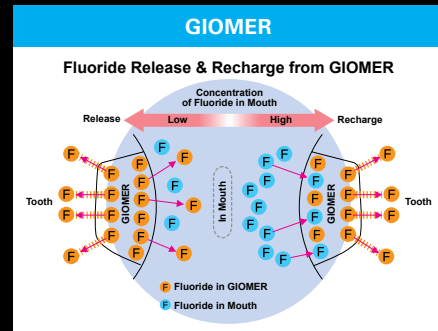
Giomers unique ability to not only release but recharge fluoride helps to provide continual protection to the tooth.

Giomer benefits:

- Decrease in acid production of cariogenic bacteria
- Formation of an acid-resistant layer
- An anti-plaque effect
- Reduction in tooth mineral solubility

The quality of any new technology must be measured by its performance. In a major university clinical study, patients at the 8-year recall with Beautifil restorations displayed no secondary caries, failures, post-op sensitivity and maintained aesthetics.¹ At 13 years these same restorations had a retention rate of 61% and a secondary caries rate of only 3%.²

Giomer technology is an effective solution to overcome the challenges within dentistry.



Giomer's continuous fluoride release and recharge capability contributes to long-term caries inhibition



Dental Fix Canada
 dentalfix.ca
 1-866-740-8829
 inquiries@dentalfix.ca

Beautiful II

Nano-Hybrid, Universal Composite with GIOMER Technology



Beautiful® II

Nano-Hybrid, Universal Composite with GIOMER Technology

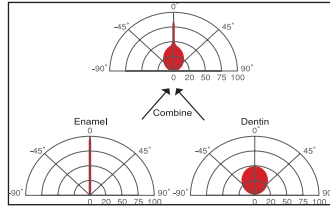
SERVE PATIENTS
INCREASE PRODUCTION
GO HOME ON TIME!

Shofu is dedicated to manufacturing the highest quality products utilizing our innovative technologies to enhance minimally invasive cosmetic dentistry.

Dental Fix Canada
dentalfix.ca
1-866-740-8829
inquiries@dentalfix.ca

AESTHETICS

As a nano-hybrid, **Beautiful II** offers superior strength and polishability. **Beautiful II's** unique filler structure combines the light transmission and diffusion properties of both dentin and enamel to blend well with surrounding dentition for picture perfect restorations.



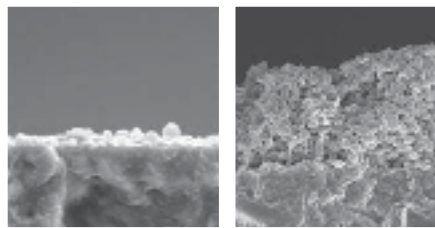
Light transmission and diffusion properties of Beautiful II



Sushil Koirala, BDS, AAAD

FLUORIDE RELEASE AND RECHARGE (GIOMER)

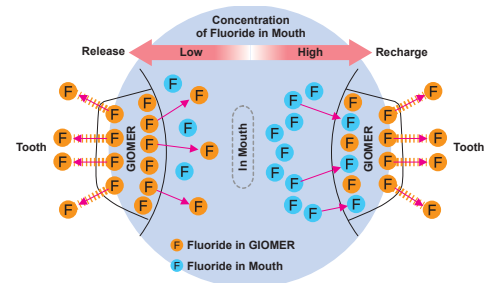
Shofu's exclusive GIOMER technology gives **Beautiful II** the ability to release and recharge fluoride and other beneficial ions for the life of the restoration. As a result of these bioactive properties, your patients receive healthful benefits unavailable in any competitor—anti-bacterial effect, acid neutralization, strengthen tooth structure and more! These benefits were validated by a clinical study at the University of Florida Dental School where no failures or decay were found in any of the restorations—even after eight years!*



Beautiful II with GIOMER
Minimal Bacteria

Competitive Composite
Advanced Bacterial Colonization

Fluoride Release & Recharge from GIOMER

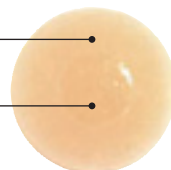


*1. Gordan V.V., et al. A clinical evaluation of a self-etching primer and a Giomer restorative material: Results at 8 years. JAM Dent. Assoc. 2007;138:621-627

PHYSICAL PROPERTIES

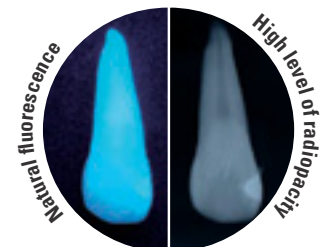
The physical properties of **Beautiful II** are among the best available. Nano-hybrid aesthetics make it ideal for anterior restorations while high filler load, wear resistance and low shrinkage make it strong enough for posterior restorations. All of this, combined with non-sticky handling and the predictability of absolute shade stability makes **Beautiful II** the perfect restorative material.

After Curing
Before Curing



Color Stable

- Filler Load: 83.3%
- Volumetric Shrinkage: <2.0%
- Radiopacity: 3.4 Al
- Wear Resistance 0.52%
- Natural Fluorescence.



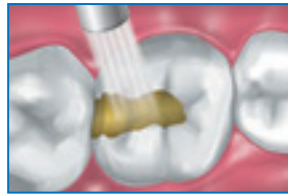


FAST AND EASY TO USE

BeutiBond is so efficient that it will increase productivity. Apply, dry, and cure – nothing is easier!



Apply **BeutiBond** into the prep and leave for 10 seconds.



Gently air dry for about 3 seconds then blow with greater force.



Light cure with a halogen (10 sec.) or LED (5 sec.) curing light.

PROVEN QUALITY

For almost a decade, **BeutiBond** has been used with confidence by dentists all over the world due to its combination of strength, minimal sensitivity, aesthetics, and ease of use. In addition, it has been evaluated by numerous research facilities and institutions; always receiving among the highest ratings.



Dental Fix Canada
dentalfix.ca
1-866-740-8829
inquiries@dentalfix.ca



CONFIDENCE

For almost 100 years, Shofu Dental's dedication to quality has made us one of the world's most respected dental products manufacturers. What can we do for you?

BeutiBond®

Offer expires Dec. 31st 2022



BeutiBond Bottle (6 ml)
Sale Price: \$192.99

- BeutiBond Bottle**
(Item No. 1781)
• 6mL, 50 microbrushes



BeutiBond (50 Unit Kit)
Sale Price: \$199.99

- BeutiBond Unit Dose**
(Item No. 1782)
• (50) 0.1mL unit doses
• 50 microbrushes

COMPARISONS OF DENTAL RESTORATIVE MATERIALS BY SHOFU EASTERN CANADA TERRITORY MANAGER DAVID GOLDSHAW

FLOWABLES															
NAME	SHOFU	DENTSPLY	KERR				3M	VOCO					KULZER		IVOCLAR
	Beautiful Flow Plus	TPH Spectra ST Flow	Revolution Formula 2	Herculite Ultra Flow	Premise Flowable	Vertise Flow	Filtek Supreme Ultra Flow	Admira FusionFlow	Admira Flow	GrandioSO Flow	GrandioSO Light Flow	GrandioSO Heavy Flow	Venus DiamondFlow	Charisma Flow	Tetric EvoFlow
TECHNOLOGY	Giomer technology	SphereTEC technology	Hybrid Resin	Smart Placement	Trimodal	Self-etch powered by OptiBond	Zirconia Silicate fillers	Ormocer Silicate	Ormocer	NDT non-dripping	NDT non-dripping	NDT non-dripping	NanoHybrid Resin	Hybrid Resin	NanoHybrid Resin
USE	Base Liner Complete-Restorative Orthodontics Core build-up	Base Liner Restorative	Base Liner small areas	Base Liner small areas	Base Liner small areas	kids for small fillings	Base Liner pit & fissure small areas	Base Liner pit & fissure small areas	Base Liner small areas	all areas	very small areas	all areas	small areas base liner	small areas	smaller areas
DISPENSE	Tips or Syringes	Tips or Syringes	Tips or Syringes	Tips or Syringes	Tips or Syringes	Tips or Syringes	Tips or Syringes	Syringes	Tips or Syringes	Syringe/caps	Syringe/caps	Syringe/caps	Tips or Syringes	Tips or Syringes	Tips/Syringes
USE ON CLASS	I, II, III, IV, V	not stated	small areas	small areas	small areas	liner or pit & fissure	III, V	III, V	III, IV	I-V	III, V	I-V	I,III,V	I,III,V	III,V
PARTICLE	Nano-Hybrid	Nano-Hybrid	Hybrid	not stated	not stated	not stated	Nano-Hybrid	Nano Hybrid	MicroHybrid	Nano-Hybrid	Nano Hybrid	Nano Hybrid	NanoHybrid	MicroHybrid	NanoHybrid
FLUORIDE RELEASING	✓	✓	✗	✗	✗	✗	✗	✗	✗	✗	✗	✗	✗	✗	✗
RECHARGABILITY	✓	✗	✗	✗	✗	✗	✗	✗	✗	✗	✗	✗	✗	✗	✗
CARIOGENIC	✓	✗	✗	✗	✗	✗	✗	✗	✗	✗	✗	✗	✗	✗	✗
BIOACTIVE	✓	✗	✗	✗	✗	✗	✗	✗	✗	✗	✗	✗	✗	✗	✗
THERAPEUTIC	✓	✗	✗	✗	✗	✗	✗	✗	✗	✗	✗	✗	✗	✗	✗
360° ROTARY FINGER GRIP SYRINGE	✓	✗	✗	✗	✗	✗	✗	✗	✗	✗	✗	✗	✗	✗	✗
VICOSITIES	F00 stackable F03 self levelling	LV or HV	ONLY 1	ONLY 1	ONLY 1	ONLY 1	ONLY 1	ONLY 1	ONLY 1	ONLY 1	ONLY 1	ONLY 1	ONLY 1	ONLY 1	ONLY 1

CONDENSABLES/PACKABLES															
NAME	SHOFU	DENTSPLY	KERR				3M		VOCO			KULZER		IVOCLAR	
	Beautiful II / LS	TPH Spectra ST	SimpliShade	SonicFill 3	Harmonize	Herculite XRV	Filtek Supreme Ultra	Filtek Universal	Viscalor	Admira Fusion	GrandioSO	Venus Diamond thicker	Venus Pearl milky	Tetric Prime	
TECHNOLOGY	Giomer technology	SphereTEC	Adaptive Response	SingleFill	Adaptive Response	none given	none given	none given	Thermo Viscous	Ormocer	none given	none given	none given	none given	
DISPENSE	Syringe/Tips	Syringe/Tips	Syringe/Tips	Tips	Syringe/Tips	Syringe/Tips	Syringe/Tips	Syringe/Tips	Syringe/Tips	Syringe/Tips	Syringe/Tips	Syringe/Tips	Syringe/Tips	Syringe/Tips	
PARTICLE	Nano-Hybrid	Micro-Hybrid	Nano-Hybrid	Nano-Hybrid	Nano-Hybrid	Micro-Hybrid	Nano-Hybrid	Nano-Hybrid	Nano-Hybrid	Nano-Hybrid	Nano-Hybrid	Nano-Hybrid	Nano-Hybrid	Nano-Hybrid	
FLUORIDE RELEASING	✓	✗	✗	✗	✗	✗	✗	✗	✗	✗	✗	✗	✗	✗	
FLUORIDE RECHARGING	✓	✗	✗	✗	✗	✗	✗	✗	✗	✗	✗	✗	✗	✗	
CARIOGENIC	✓	✗	✗	✗	✗	✗	✗	✗	✗	✗	✗	✗	✗	✗	
BIOACTIVE	✓	✗	✗	✗	✗	✗	✗	✗	✗	✗	✗	✗	✗	✗	
THERAPEUTIC	✓	✗	✗	✗	✗	✗	✗	✗	✗	✗	✗	✗	✗	✗	
SHADE VARIETY	14 shades	6 shades	3 shades	4 shades	29 shades	38 shades	36 shades	8 shades	11 shades	18 shades	17 shades	23 shades	23 shades	12 shades	